

DIP CR 'DIP Swagger alignment with Energy Market Data Specification (EMDS)' Initial Assessment

Public

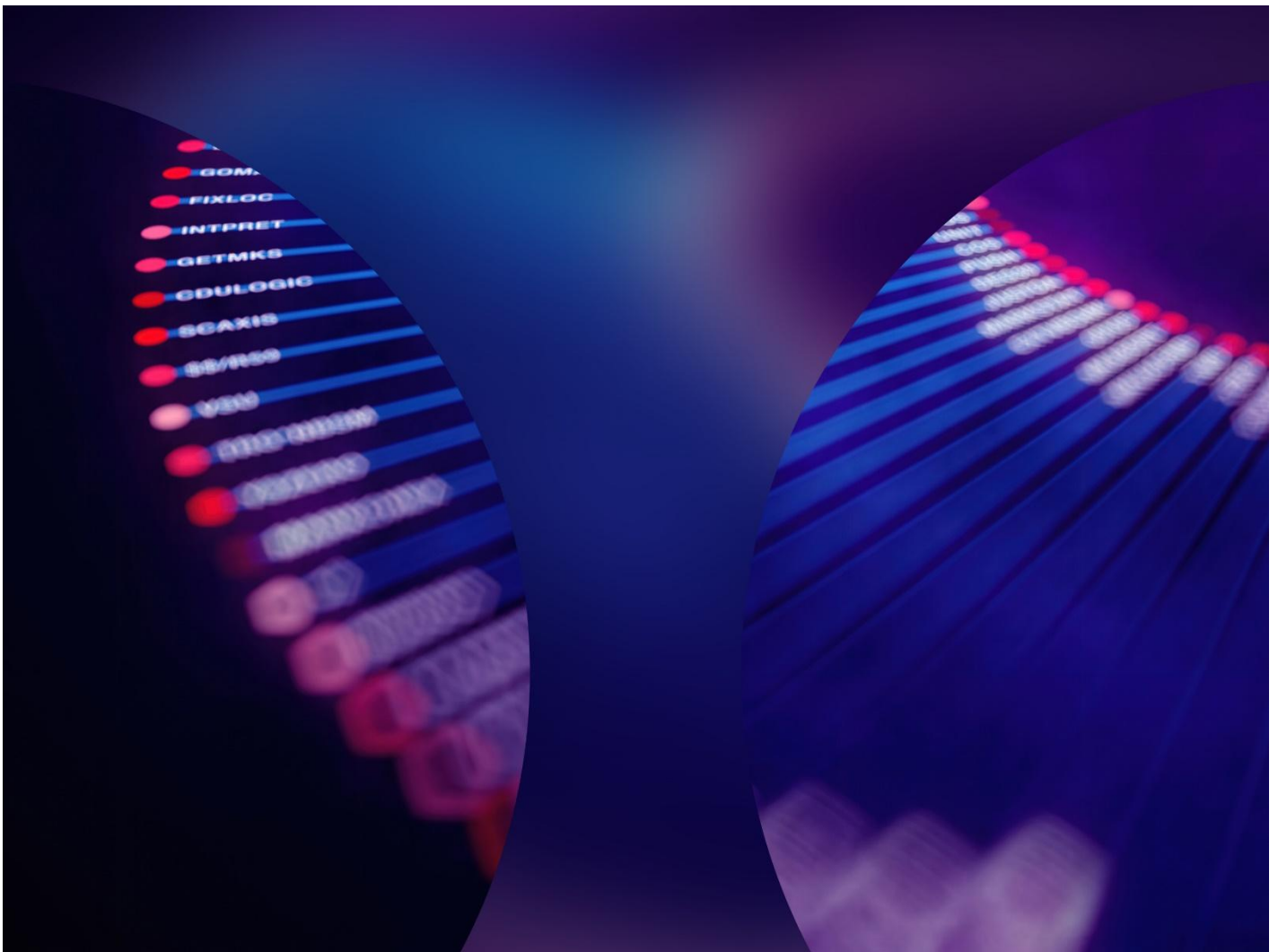
Assessment

Document owner
DIP Manager

Document number
1.0

Date
23 April 2026

Document status
Initial Assessment



Summary

About this document

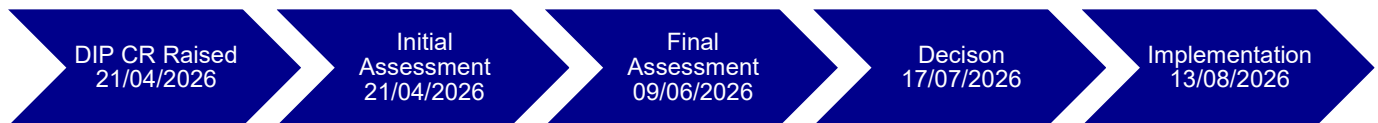
You can find the definitions of the terms and acronyms used in this document in the [DIP Glossary](#)¹.

This document provides information on a DIP CR. It provides an assessment of the proposed change and its progression.

There are **two** parts to this document, which are:

- This document. It is the main document providing insight into the change, solution, and progression.
- **Attachment A** contains the DIP CR Proposal Form.

Timeline



Executive summary

EMDS¹ serves as the master copy for all Message² formats and is maintained by the Retail Energy Code (REC) Code Manager. DIP Swagger, managed by the DIP Manager, must align with EMDS regarding Message formats. If there is any misalignment, DIP Swagger must be updated to match EMDS. Currently, there is a misalignment between EMDS and DIP Swagger concerning the list of Meter Point Administration Numbers (MPANs) on site. To address this issue, it is proposed that DIP Swagger be updated to align with EMDS in the August DIP Manage Release scheduled for **August 13, 2026**.

| | Impacts | Explanation |
|----------------|----------|---|
| DIP Users | Low | This change supports DIP Users as it aligns Swagger with EMDS. |
| DIP Manager | Neutral | N/A |
| DIP Rules | Neutral | N/A |
| DIP objectives | Positive | This change supports accurate data as Swagger will be aligned to EMDS. |
| | | Amending DIP Swagger to EMDS ensures the DIP Manager is supporting the single source of truth for message formatting used by DIP Users. In turn, ensuring the document hierarchy is maintained and supported. |
| Industry Codes | Positive | |
| Cost | Low | Add |

¹ Shall mean the repository containing data items of Messages which forms part of the REC's Energy Market Architecture Repository (EMAR)

² A message format used by DIP Users to share information via the DIP

DIP CR 'DIP Swagger alignment with Energy Market Data Specification (EMDS)' Initial Assessment

This change is considered 'all other changes' as it does not meet the criteria to be a Tier 1 change.

Change Tier

Two

Overview

Background

EMDS³ serves as the master copy for all Message⁴ formats and is maintained by the Retail Energy Code (REC) Code Manager. DIP Swagger, managed by the DIP Manager, must align with EMDS regarding Message formats. If there is any misalignment, DIP Swagger must be updated to match EMDS.

What is the issue?

Currently, there is a misalignment between EMDS and DIP Swagger concerning the list of Meter Point Administration Numbers (MPANs) on site in the REP900 file. This has created misalignment between EMDS and DIP Swagger.

Solution

Amend the REP900 file to:

DI-566-List-Of-MPANS-On-Site - nullable becomes false

```

1896      ... DI-566-List-Of-MPANS-On-Site:
1897      ...   description : List of MPANS on site.
1898      ...   type : string
1899      ...   minLength : 1 # DIN-1024
1900      ...   maxLength: 1400
1901      ...   # ADO item 73592 - nullable becomes false
1902      ...   nullable : false
1903      ...   example : MPAN1 MPAN2 MPAN3 MPAN4

```

Proposers rationale

DIP Swagger should align with EMDS. This ensures that there is a single source of truth for DIP Users on the message formats they use to send and receive information from one another.

It is a minor documentation change to align Swagger with the EMDS.

Proposers red-lining

There are no amendments to the DIP Rules⁵ for DCR0018. It is a DIP Swagger amendment.

³ Shall mean the repository containing data items of Messages which forms part of the REC's Energy Market Architecture Repository (EMAR)

⁴ A message format used by DIP Users to share information via the DIP

⁵ The DIP Supplement and all associated DSDs.

Impacts, benefits, and risks

Impacts

This change will have minimal impact as it is changing a field within Swagger to align with EMDS. DIP Users will have to align their systems to Swagger and EMDS. However, the complexity of amending a field isn't considered high. Thus, the impact should be minimal.

Benefits

This change will benefit DIP Users by ensuring that Swagger aligns with EMDS. This is a fundamental concept within the DIP Rules and beyond. It reinforces the idea that there is a "single source of truth" for DIP Users and others to reference when developing, modifying, or implementing changes to message formats.

Risks

This DIP CR carries minimal risks as DIP Users and others use EMDS as the master copy of message formats. This change ensures there is alignment with Swagger and EMDS, which strengthens the link between Swagger and EMDS by resolving issues where misalignment may have occurred (for whatever reason).

| | Impacts | Explanation |
|--|----------|---|
| DIP Users | Low | This change supports DIP Users as it aligns Swagger with EMDS. |
| DIP Manager | Neutral | N/A |
| DIP Rules | Neutral | N/A |
| Industry Codes | Positive | Amending DIP Swagger to EMDS ensures the DIP Manager is supporting the single source of truth for message formatting used by DIP Users. In turn, ensuring the document hierarchy is maintained and supported. |
| Cost | Low | This is a Swagger change and should cost >£1k. |
| Change Tier | Two | This change is considered 'all other changes' as it does not meet the criteria to be a Tier 1 change. |
| Applicable DIP Objective (a) | | |
| <ul style="list-style-type: none"> Provide accurate and timely support for the sharing of applicable market data. | Positive | This change supports accurate data as Swagger will be aligned to EMDS. |
| Applicable DIP Objective (b) | | |
| <ul style="list-style-type: none"> Further consumer interests through the appropriately governed sharing of data. | Neutral | |
| Applicable DIP Objective (c) | | |
| <ul style="list-style-type: none"> Facilitate competitive change and innovation | Neutral | |

DIP CR 'DIP Swagger alignment with Energy Market Data Specification (EMDS)' Initial Assessment
through the efficient and
economic delivery of reliable
and adaptable services.

DIP CR tier, progression, and implementation/recommendation

Change Tier

| Tier | Criteria | Explanation |
|--------|---|--|
| Tier 1 | <ul style="list-style-type: none"> an implementation cost greater than £500,000 for the DIP Manager and/or £250,000 for DIP Users; placing new obligations on DIP Users and/or the DIP Manager that will require a change to the DIP User's business operating model; an Implementation Date will be more than 24 months after the date on which the decision is made. | This change is low-cost and does not impose new obligations on DIP Users that require changes to their operating model; it will be implemented shortly after a decision is made. |
| Tier 2 | <ul style="list-style-type: none"> All other changes | This is considered 'all other changes' as it does not meet the criteria to be a Tier 1 Change Request (CR). |

Progression timeline

| Event | Date |
|-------------------------------|------------|
| Initial Assessment published | 23/04/2026 |
| Final Assessment published | 09/06/2026 |
| DIP CR presented for decision | 14/07/2026 |
| Decision published | 17/07/2026 |
| Proposed Implementation Date | 13/08/2026 |

Implementation

DIP Manager initially recommends an Implementation Date for **CR0018** of:

- 13 August 2026** as part of the standard **August 2026 DIP Release**.