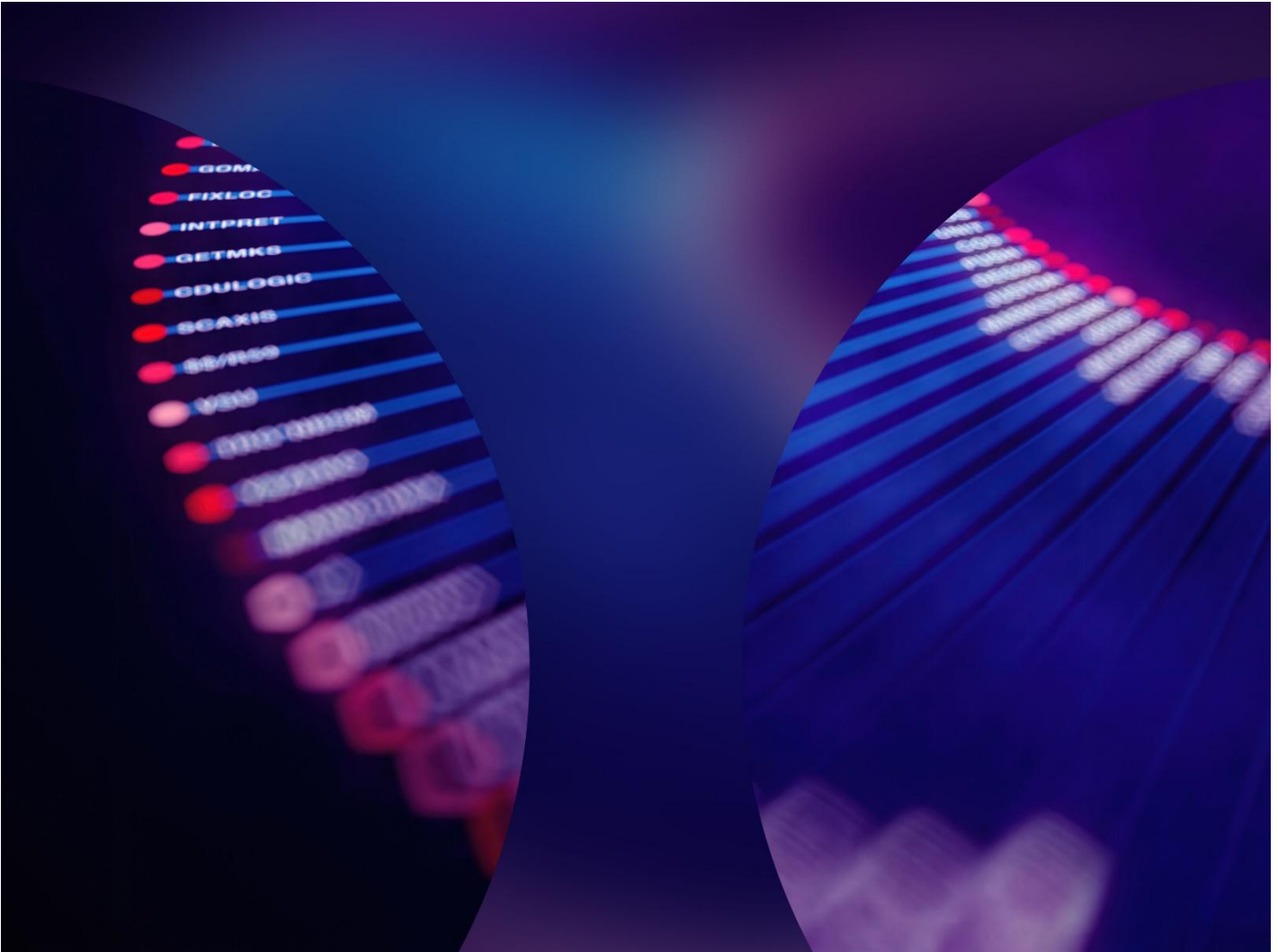


DIP Change Request Proposal Form 0018

Public

Document owner	Document number	Date	Document status
Proposer	1.0	XX Month 202X	Public



ELEXON | DIP

About this document

This document details a DIP Change Request (CR) that the DIP Manager has received, either digitally or provided in any other appropriate means. The CR details the background, issue, solution, and impacts. In addition, it also provides details on the progression routes of the CR as well as any other supporting information (if provided).

Information on the DIP Change Process

The DIP Change Process is detailed on the DIP Manager's website [here](#). Moreover, the process is outlined in [DIP Subsidiary Document \(DSD\) 004, DIP Change and Document Management](#).

Personal Details

Anyone can raise a DIP CR¹. This includes (but is not limited to) individuals, companies, or organisations. The information provided **will be made public** when the CR is raised and published to the [DIP Manager's website](#).

Details	Answer
Name	Rob Golding
Organization (if applicable)	DIP Manager
Company (delete as required/if applicable)	DIP Manager
Email	Rob.Golding@Elexon.co.uk

Change Request

To enable a CR to progress, the DIP Manager needs information that it can assess. This enables the DIP Manager to determine whether a request is valid; where further information is needed, the DIP Manager will request it² Please answer the information below.

If you need support with your CR, the DIP Manager can act as a 'critical friend' to support the development of a CR³.

Information	Answer
Title (mandatory)	DIP Swagger alignment with Energy Market Data Specification (EMDS)
Background (mandatory)	EMDS ⁴ serves as the master copy for all Message ⁵ formats and is maintained by the Retail Energy Code (REC) Code Manager. DIP Swagger, managed by the DIP Manager, must align with EMDS regarding Message

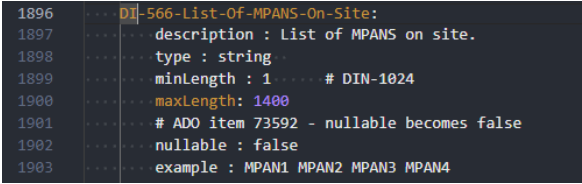
¹ DSD004, 2.3.1 Any person may submit a DIP CR (regardless of whether they are a [DIP User](#)). For the avoidance of doubt, this includes the [DIP Manager](#), DCAB and the Authority. DIP CRs shall be submitted electronically via the [DIP Portal](#) but may be submitted by other means as agreed with the [DIP Manager](#).

² DSD004, 2.4

³ DSD003, 2.4.1.

⁴ Shall mean the repository containing data items of Messages which forms part of the REC's Energy Market Architecture Repository (EMAR)

⁵ A message format used by DIP Users to share information via the DIP

	<p>formats. If there is any misalignment, DIP Swagger must be updated to match EMDS.</p>
<p>Issue (mandatory)</p>	<p>Currently, there is a misalignment between EMDS and DIP Swagger concerning the list of Meter Point Administration Numbers (MPANs) on site in the REP900 file. This has created misalignment between EMDS and DIP Swagger.</p>
<p>Solution (mandatory)</p>	<p>Amend the REP900 file to:</p> <p><u>DI-566-List-Of-MPANs-On-Site - nullable becomes false</u></p>  <p>DIP Swagger should align with EMDS. This ensures that there is a single source of truth for DIP Users on the message formats they use to send and receive information from one another.</p> <p>It is a minor documentation change to align Swagger with the EMDS.</p>
<p>Impacts(s) (if known)</p>	<p>This change will have minimal impact as it is changing a field within Swagger to align with EMDS. DIP Users will have to align their systems to Swagger and EMDS. However, the complexity of amending a field isn't considered high. Thus, the impact should be minimal.</p>
<p>Benefits (if known)</p>	<p>This change will benefit DIP Users by ensuring that Swagger aligns with EMDS. This is a fundamental concept within the DIP Rules and beyond. It reinforces the idea that there is a "single source of truth" for DIP Users and others to reference when developing, modifying, or implementing changes to message formats.</p>
<p>Risks (if known)</p>	<p>This DIP CR carries minimal risks as DIP Users and others use EMDS as the master copy of message formats. This change ensures there is alignment with Swagger and EMDS, which strengthens the link between Swagger and EMDS by resolving issues where misalignment may have occurred (for whatever reason).</p>

DIP Rules, DIP, and DIP Portal

When submitting a CR, the DIP Manager must evaluate it according to the DIP Rules. This helps the DIP Manager understand how to move forward with the CR and identify any necessary changes not only to the DIP Rules but also to the DIP itself, or the DIP Portal, or any other change area, as detailed on the [DIP Website](#).

DIP CR Objectives

Please determine one or all of the objectives the DIP CR will fulfil.

Objectives	Answer
(a) Provide accurate and timely support for the sharing of applicable market data.	This change supports accurate data as Swagger will be aligned to EMDS.
(b) Further consumer interests through the appropriately governed sharing of data.	
(c) Facilitate competitive change and innovation through the efficient and economic delivery of reliable and adaptable services.	

[DIP Rules](#) (link to all DIP Rules)

Please determine the document that the DIP CR will impact. Provide amended text (if available).

Document	Answer
DSD001 – Governance	No DSD changes.
DSD001, Annex 1	
DSD002 – Operation and Connection	
DSD002, Annex 1	
DSD002, Annex 2	
DSD002, Annex 3	
DSD002, Annex 4	
DSD003 – Assurance and Reporting	
DSD004 – DIP Change and Document Management	
DSD005 – Funding and Budgeting	
DSD006 – DIP Data Management	
DD007 – Glossary	

DIP and/or DIP Portal

Please determine that there will need to be system changes due to your CR.

Impacted area	Answer
DIP System	
DIP Portal	
DIP Message Interface	Amendment to DIP Swagger

DIP Users

To enable the DIP Manager to impact assess whether there will be impacts to DIP Users, please identify how the change could affect them (if at all).

Impacted area	Answer
Funding	No known impacts to DIP Users.
DIP Change and Advisory Board (DCAB membership)	
DIP Assurance Strategy	
Other (please specify)	

Industry Codes

To support the development of your CR, please answer whether there are any impacts on Industry Codes (if any).

Code	Answer
Balancing and Settlement Code (BSC)	Aligning Swagger with EMDS.
Retail Energy Code (REC)	
Smart Energy Code (SEC)	
Distribution Connection Use and Connection Agreement	
Other (if applicable)	

Tier

The DIP Rules set out who will decide for DIP CRs. This is determined by the 'tier' of change to which they are classified. The table below details the different tiers of DIP Changes.

Please determine the tier of your change and whether there are timeliness considerations.

Tier	Description	Answer
One	<p>A material change.</p> <p>Criteria include, but are not limited to:</p>	

	<ul style="list-style-type: none"> • an implementation cost greater than £500,000 for the DIP Manager and/or £250,000 for DIP Users; • placing new obligations on DIP Users and/or the DIP Manager that will require a change to the DIP User's business operating model; • an Implementation Date will be more than 24 months after the date on which the decision is made. 	
Two	All other changes.	This change is considered 'all other changes' as it does not meet the criteria to be a Tier 1 change.